

Jerusalem College of Engineering

(An Autonomous Institution affiliated to Anna University, Chennai)

NBA and NAAC Accredited Institution

Velachery Main Road, Narayanapuram, Pallikaranai, Chennai-600 100



CURRICULUM DEVELOPMENT PROCESS

Prepared by
Office of Academic Affairs

Dr. P. ANURADHA, Ph.D.,
Dean-Academics

Jerusalem College of Engineering
Velachery Main Road, Narayanapuram,
Pallikaranai, Chennai-600 100.



Dr. RAMESH S
Principal

Jerusalem College of Engineering (Autonomous)
Velachery Main Road, Narayanapuram,
Pallikaranai, Chennai-600 100.

CONTENTS

| Sl.No | TITLE | PAGE NO. |
|--------------|--|-----------------|
| 1 | ABOUT THE INSTITUTION | 1 |
| 2 | VISION, MISSION AND QUALITY POLICY | 2 |
| 3 | PROCESS FOR CURRICULUM DESIGN, COURSE DESIGN AND ENHANCEMENT OF CURRICULUM | 3 |
| 4 | CURRICULUM DESIGN PROCESS - FLOW CHART | 4 |
| 5 | COURSE DESIGN PROCESS – FLOW CHART | 5 |
| 6 | PROCESS FOR ENHANCING CURRICULUM – FLOW CHART | 6 |

ABOUT THE INSTITUTION

Jerusalem College of Engineering (JCE) was established in the year 1995 under the umbrella of Jerusalem Educational Trust to impart Quality Engineering Education. Over the period of 29 years it has made a mark for itself and got established as an Institution which offers excellent Engineering Education. The institution was granted Autonomous status by University Grants Commission in 2019. It is one of the very rare Institutions which is situated in close proximity to premier educational institutions and also the IT Hub of Chennai. The faculty of the college have a nice blend of both academic and industrial experience. The alumni of the college holding key positions in various National/International organizations and Academic Institutions have brought laurels to the institution. The Institution is accredited by NAAC and NBA accreditation is obtained for B.E.- BME and B.E.- CSE programs.

The Institution offers the following nine Undergraduate programmes in Engineering, four postgraduate programmes in Engineering and two Management programmes. The departments of Civil Engineering, Electrical and Electronics Engineering, Electronics and Communication Engineering and Chemistry are recognized research centres under Anna University

Undergraduate Programmes

- B.E. Biomedical Engineering
- B.E. Civil Engineering
- B.E. Computer Science and Engineering
- B.E. Computer Science and Engineering (Artificial Intelligence and Machine Learning)
- B.E. Computer Science and Engineering (Cyber Security)
- B.E. Electrical and Electronics Engineering
- B.E. Electronics and Communication Engineering
- B.Tech. Artificial Intelligence and Data Science
- B. Tech. Computer Science and Business Systems
- B.Tech. Information Technology

Postgraduate Programmes

- M.E. Applied Electronics
- M.E. Computer Science and Engineering
- M.E. Construction Engineering and Management
- M.E. Power Electronics and Drives
- Master of Business Administration
- Master of Business Administration (Hospital Administration)

VISION

Jerusalem College of Engineering is committed in emerging as an International Institution of Excellence in imparting the finest quality Engineering, Technology and Management Education rooted in ethical and societal values through various academic programmes, multi-disciplinary research, consultancy and entrepreneurship activities, and hence in contributing towards social transformation and nation building.

MISSION

- Generating abundant resources and making conducive policies, the management led by the Chairperson strives towards promoting globally competitive academic programmes augmented with value added courses, in-plant training, co-curricular activities and ambience that support intellectual growth and skill acquisition.
- Promoting collaborative trans-border research programmes, continuing education in synergy with academia, industries and research organizations leading to real time solutions and lifelong learning.
- Transforming young men and women into competent professionals and entrepreneurs motivated by a passion for professional excellence, driven by human values and proactively engaging in the betterment of the society through innovative practices and academic excellence.
- Facilitating effective interaction among faculty and students, and fostering network of alumni, industries, institutions and other stakeholders for successful career gain and placement.

QUALITY POLICY

Qualitative Education and sense of high discipline are promises, we at the Jerusalem College of Engineering make to posterity and accordingly shall adopt and adhere to Quality policies, constantly monitor accountability and assure all stake holders that

“WE SHALL KEEP OUR PROMISE”

PROCESS FOR CURRICULUM DESIGN, COURSE DESIGN AND ENHANCEMENT OF CURRICULUM

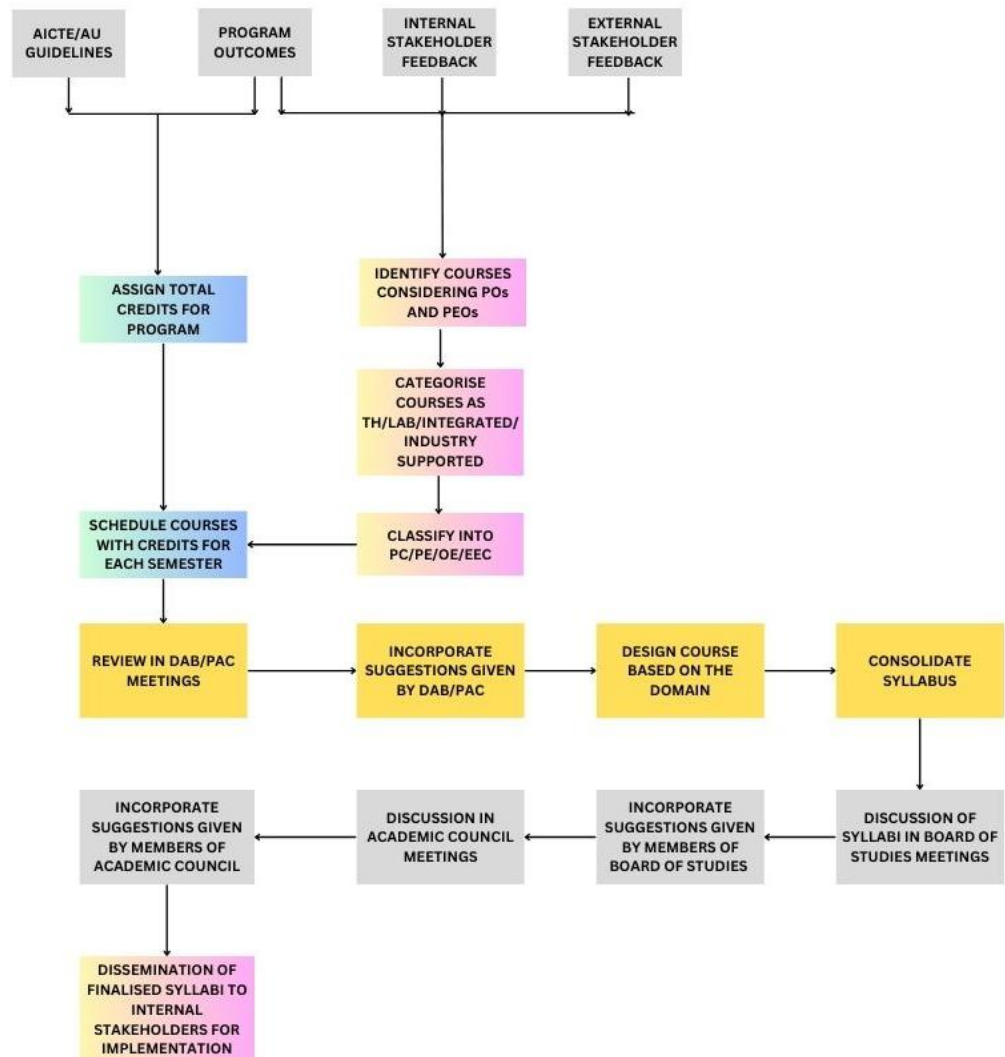
The objective of the curriculum is to provide improved flexibility and wider coverage of courses and also maintain the development of the students in compliance with the latest requirements of the industry. Global, national and local requirements are reflected in the curriculum of the institution. The institution follows choice-based credit system (CBCS), following the regulations of Anna University. Upon obtaining Autonomous status in 2019 and to be on par with the latest industrial standards the college made revisions in the syllabus. The department has introduced computer-based new courses. The changed syllabus focusses on knowledge, skill development, employability updation and industry-interface link along with social relevance.

The curriculum and syllabi of the program have been designed based on the guidelines of the AICTE/Affiliating University and keeping in view the vision, mission, Program Educational Objectives and Program Specific Outcomes of the program. The process involves the participation of the stakeholder's feedback and the approval of the Board of Studies.

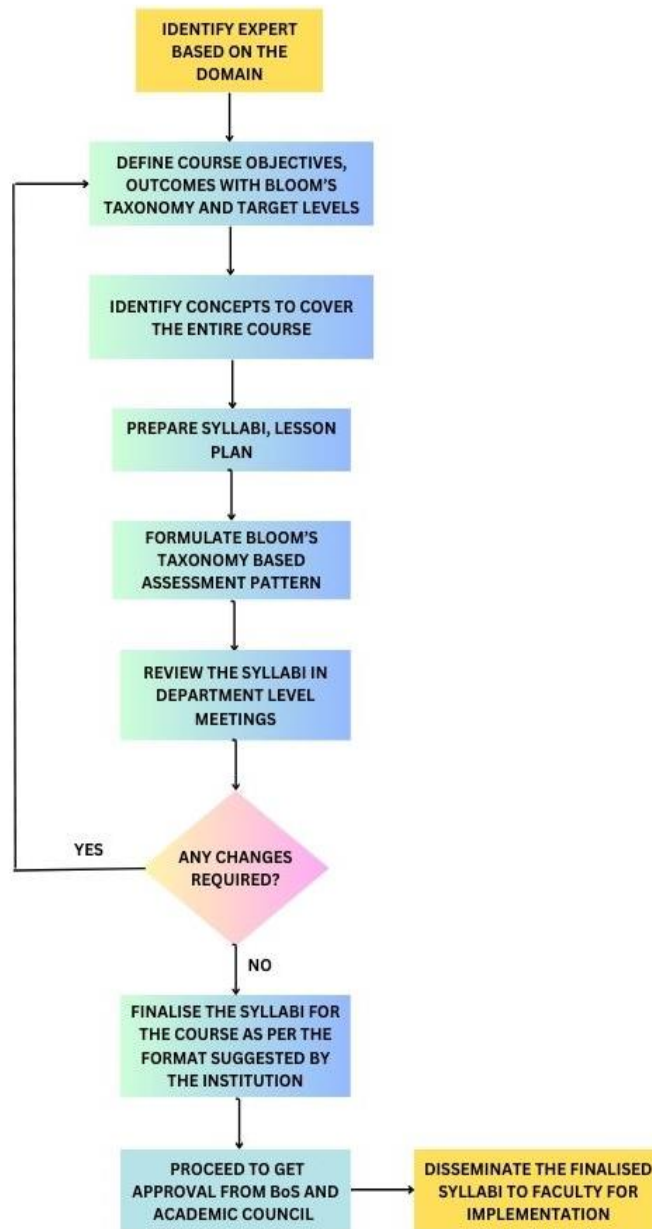
The Department Program Assessment Committee (PAC) is constituted under the Head of the Department comprising of senior faculty members with expertise in various domains. The committee collects suggestions from other faculty members of the department, gaps that has been identified from previous regulation syllabi, feedback from Alumni and other stakeholders to frame the curriculum and syllabi. These suggestions are incorporated into the syllabus by faculty with relevant domain expertise. The tentative draft syllabus is submitted to the Department Advisory Board (DAB) and PAC and is analysed by them for alignment with PEOs, POs and PSOs. The final draft is presented in the Board of Studies Meeting by the Head of the Department for final approval and forwarded to Academic Council. The finalized syllabus is then disseminated to faculty for implementation.

The flow charts for curriculum design, course design and process for enhancing curriculum describe the various steps taken for designing and enhancing the curriculum from time to time.

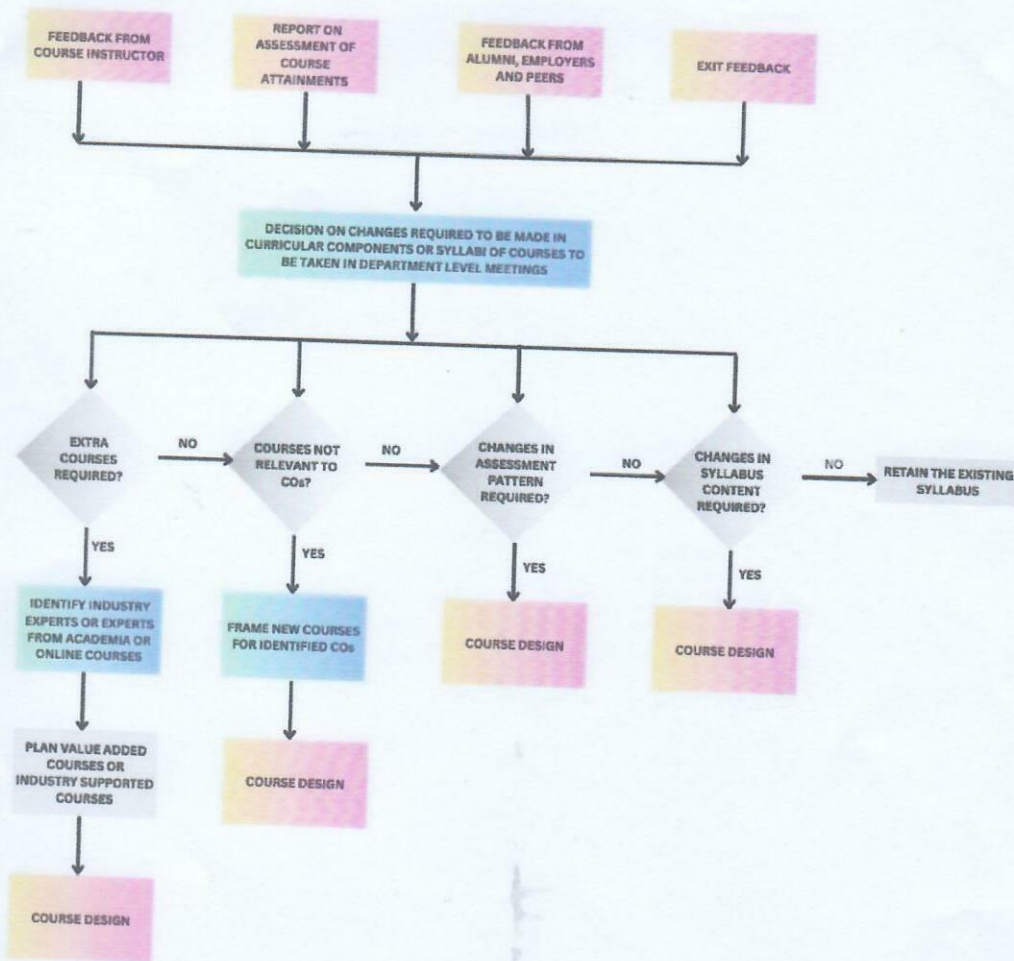
CURRICULUM DESIGN PROCESS - FLOW CHART



COURSE DESIGN PROCESS - FLOW CHART



PROCESS FOR ENHANCING CURRICULUM - FLOW CHART



Handwritten signature in blue ink.

Dr. P. ANURADHA, Ph.D.,
 Dean-Academics
 Jerusalem College of Engineering
 Velachery Main Road, Narayanapuram,
 Pallikaranai, Chennai-600 100.



Handwritten signature in green ink.

Dr. RAMESH S
 Principal
 Jerusalem College of Engineering (Autonomous)
 Velachery Main Road, Narayanapuram,
 Pallikaranai, Chennai-600 100.